



📍 9 Lynwood Drive, Trowbridge, BA14 9TU

🏠 Guide Price £290,000

An attractive three bedroom, end of terrace house with private rear garden and driveway parking. Conveniently situated on the Bradford on Avon side of the town, within walking distance of schools and amenities.

- Highly Regarded Location
- End Of Terrace
- Three Bedrooms
- Two Reception Rooms
- One Bathroom
- Garden
- Private Driveway Parking
- Well Presented
- Vendor Suited

🏡 Freehold

🏠 EPC Rating C



A well presented, three bedroom, two reception room end of terrace home with good sized garden and driveway parking situated on this highly desirable location to the west of the town boasting a range of local amenities.

Upon entering the home you are welcomed into the reception room which is located to the front of the house, a stylish media wall sets the tone of the room which provides generous living space. The dining room is situated to the rear of the house and leads into the kitchen. The kitchen has been carefully designed and offers a range of floor and wall units along with an integrated electric fan oven, gas hob and extractor hood. There is space for a fridge and a washing machine. The kitchen provides access to the charming rear garden and is a wonderful space for outside dining. Half of the garage has been converted into a study ideal for those requiring a space for home working and is accessible from the dining room. To the first floor are three bedrooms along with the family bathroom. The family bathroom has been finished to a modern standard with white fittings with bath and shower attachment above as well as a vanity unit with sink and cupboards and an electric towel radiator.

Externally there is a good sized rear garden which is mainly laid to lawn bordered by mature beds interspersed with plants and shrubbery. There is a patio area directly from the kitchen which creates a charming space for dining or enjoying the sun. There is also a front garden mainly laid to lawn and a driveway providing off street parking.

Situation

The Broadmead development is situated on the western side of Trowbridge, which is the County town of Wiltshire. The town offers a wide range of amenities including various supermarkets and retail outlets, swimming pool and sports centres, library, doctors and dental surgeries, cinema complex with various bars and restaurants and a mainline railway station providing direct access to the cities of Bath, Bristol and London Waterloo. There are also numerous primary schools and three secondary schools. The World Heritage City of Bath is about 12 miles away and provides an extensive range of amenities with excellent shopping facilities, The Theatre Royal, Thermae Bath Spa, a cinema, numerous restaurants, many schools and a mainline railway station providing direct access to London Paddington.

Property Information

Council Tax Band; C

EPC Rating; C

Freehold

Mains Services

Gas Fired Central Heating & UPVC Double Glazing



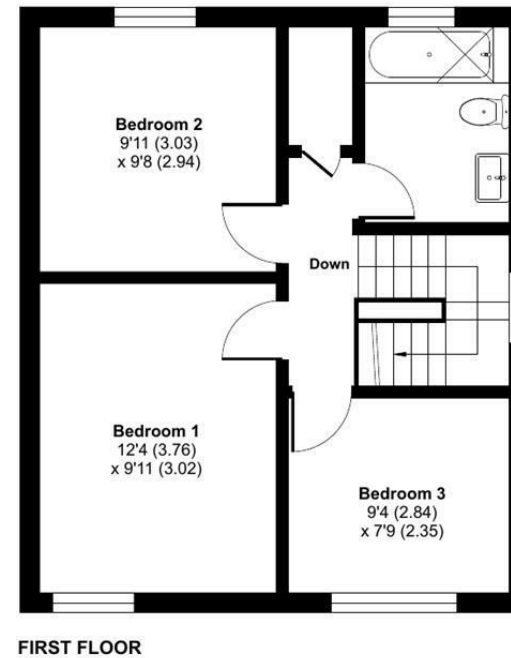
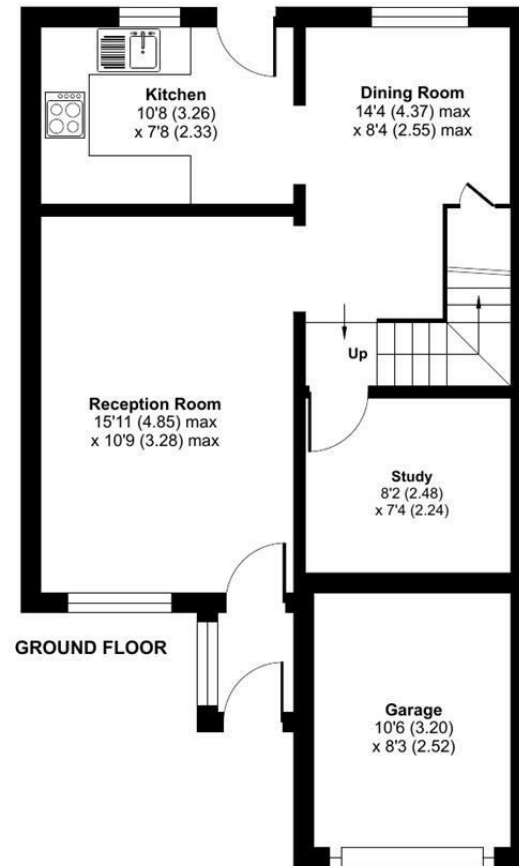
Lynwood Drive, Trowbridge, BA14

Approximate Area = 914 sq ft / 84.9 sq m

Garage = 86 sq ft / 7.9 sq m

Total = 1000 sq ft / 92.8 sq m

For identification only - Not to scale



 Floor plan produced in accordance with RICS Property Measurement 2nd Edition, Incorporating International Property Measurement Standards (IPMS2 Residential). © ntkhcom 2025. Produced for Strakers. REF: 1317462

Disclaimer These particulars, whilst believed to be accurate are set out as a general outline only for guidance and do not constitute any part of an offer or contract. Intending purchasers should not rely on them as statements of representation of fact, but must satisfy themselves by inspection or otherwise as to their accuracy. No person in this firm's employment has the authority to make or give any representation or warranty in respect of the property. All measurements and distances are approximate only. Your home is at risk if you do not keep up repayments on a mortgage or other loan secured on it.